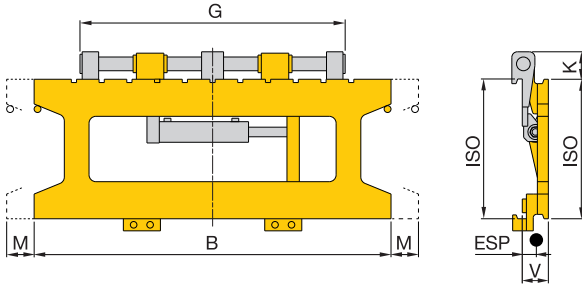


# Sideshifters (Heavy-Duty)

1 hydraulic function



With this heavy-duty sideshifter, shifting is effected via chrome-plated shafts.

Model	Load capacity	LC (LSP)	ISO	M	B	G	K	V	CoG (ESP)	Weight	Add. weight per 100 mm width of fork carriage	Price
	kg											
S 7 - SW 16	1600	500	2	100	950	890	90	80	40	120	6,3	
S 7 - SW 25	2500	600	2	100	1050	890	90	80	40	125	6,3	
S 7 - SW 30	3000	500	3	100	1100	990	100	95	50	180	9,2	
S 7 - SW 40	4000	500	3	100	1200	990	100	95	50	190	9,2	
S 7 - SW 45	4500	600	3	100	1200	1100	110	105	55	235	11,0	
S 7 - SW 48	5000	600	3	100	1300	1100	110	105	55	245	11,0	
S 7 - SW 50	5000	600	4	100	1400	1100	110	115	65	355	13,5	
S 7 - SW 60	6000	600	4	150	1500	1280	110	115	65	375	13,5	
S 7 - SW 70	7000	600	4	150	1500	1350	120	125	70	425	15,3	
S 7 - SW 80	8000	600	4	150	1600	1350	120	125	70	440	15,3	
S 7 - SW 80/900	8000	900	4	150	1800	1830	120	130	70	535	16,8	
S 7 - SW 100	10000	600	4	150	1800	1830	120	130	70	535	16,8	
S 7 - SW 80/1100	8000	1100	4	150	2000	1830	120	130	70	550	16,8	

- Ex-protection version on request.



## Standard values for residual load capacity of lift trucks\*\*

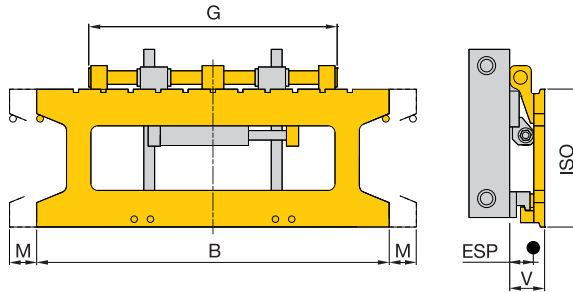
Sideshifters	S 7 -	SW 16	SW 25	SW 25	SW 30	SW 40	SW 40	SW 45	SW 45	SW 48/50	SW 60	SW 70	SW 80	SW 100
Load capacity lift truck	kg	1500	2000	2500	3000	3500	4000	4500	5000/500	5000	6000	7000	8000	10000
X*	mm	350	450	450	450	500	500	500	500	560	560	650	650	750
LC (LSP) = 500 mm	kg	1320	1780	2250	2640	3100	3560	3950	4400					
LC (LSP) = 600 mm	kg	1200	1630	2050	2410	2840	3260	3630	4040	4370	5270	6140	7040	8820
LC (LSP) = 700 mm	kg	1090	1500	1880	2220	2620	3010	3350	3730	4060	4890	5720	6560	8260
LC (LSP) = 800 mm	kg	1000	1380	1740	2050	2430	2790	3110	3460	3780	4560	5360	6150	7770

\*\* The load capacity applies to lifting heights up to 3300 mm; specifications for greater lifting heights on request.

\* Assumed dimensions

# Sideshifters (Heavy-Duty), Integral Design

1 hydraulic function



S7

Model	Load capacity	LC (LSP)	ISO	M	B	G	V	CoG (ESP)	Weight	Add. weight per 100 mm width of fork carriage	Price
	kg	mm		mm	mm	mm	mm	mm			
S 7 - SWI 16	1600	500	2	100	950	900	115	60	145	6,3	
S 7 - SWI 25	2500	600	2	100	1050	900	115	60	150	6,3	
S 7 - SWI 30	3000	500	3	100	1100	930	130	75	215	9,2	
S 7 - SWI 40	4000	500	3	100	1200	930	130	75	225	9,2	
S 7 - SWI 45	4500	600	3	100	1200	950	140	80	260	11,0	
S 7 - SWI 48	5000	600	3	100	1300	950	140	80	270	11,0	
S 7 - SWI 50	5000	600	4	100	1400	1100	155	90	400	13,5	
S 7 - SWI 60	6000	600	4	150	1500	1200	155	90	420	13,5	
S 7 - SWI 70	7000	600	4	150	1500	1250	165	95	500	15,3	
S 7 - SWI 80	8000	600	4	150	1600	1250	165	95	515	15,3	
S 7 - SWI 80/900	8000	900	4	150	1800	1380	190	105	690	16,8	
S 7 - SWI 100	10000	600	4	150	1800	1380	190	105	690	16,8	
S 7 - SWI 80/1100	8000	1100	4	150	2000	1380	190	110	720	16,8	

- Lost load center, center of gravity and weight from front edge of side brackets.

- Ex-protection version on request.

- Detail drawings of fork carriage, roller studs and chain anchors or the fork carriage have to be provided by the customer.



## Standard values for residual load capacity of lift trucks\*\*

Sideshifters, Integral Design	S 7 -	SWI 16	SWI 25	SWI 25	SWI 30	SWI 40	SWI 40	SWI 45	SWI 45	SWI 48/50	SWI 60	SWI 70	SWI 80	SWI 100
Load capacity lift truck	kg	1500	2000	2500	3000	3500	4000	4500	5000/500	5000	6000	7000	8000	10000
X*	mm	350	450	450	450	500	500	500	500	560	560	650	650	750
LC (LSP) = 500 mm	kg	1340	1800	2260	2700	3170	3630	4030	4490					
LC (LSP) = 600 mm	kg	1210	1640	2060	2470	2900	3320	3700	4110	4520	5480	6330	7240	9230
LC (LSP) = 700 mm	kg	1100	1510	1900	2270	2680	3060	3410	3800	4180	5030	5890	6740	8630
LC (LSP) = 800 mm	kg	1010	1400	1750	2100	2480	2840	3170	3520	3900	4690	5510	6310	8110

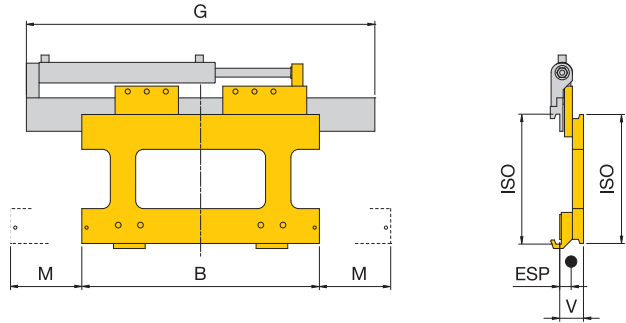
\*\* The load capacity applies to lifting heights up to 3300 mm; specifications for greater lifting heights on request.

\* Assumed dimensions

# Sideshifters for Container Loading

## 1 Hydraulikfunktion

Sideshifters for container loading have a greater stroke in order to push loads beyond the vehicle contour.



Model	Load capacity at LC (LSP)		ISO	M	B	G	V	CoG (ESP)	Weight	Price
	kg	mm		mm	mm	mm	mm			
S 7 - CS 16	1600	500	2	200	750	970	70	28	80	
S 7 - CS 25	2500	600	2	225	750	1100	75	30	90	
S 7 - CS 30	3000	500	3	250	750	1180	80	33	130	

- Other designs on request.

## Standard values for residual load capacity of lift trucks (see page 55 - SW16, SW25, SW30)



Sideshifter for container loading combined with special fork positioner

# Multiple Sideshifters (Heavy-duty)

Multiple sideshifters allow several pallets to be picked up side by side simultaneously. The adjustability of the fork carriages to each other enables the loads to be pushed apart and together. A basic sideshift allows the entire attachment to be moved sideways independently of the individual adjustment. The multiple sideshifters require an

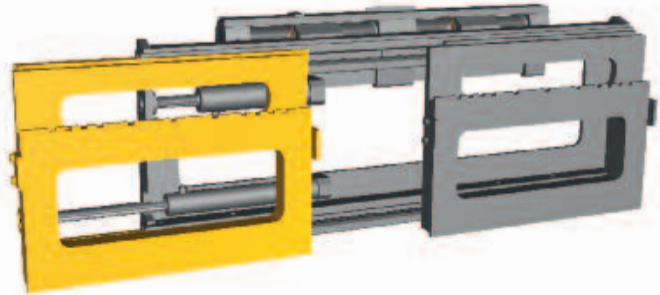
even load on all fork carriages, i.e., all fork carriages must always be loaded evenly.

All multiple sideshifters are equipped with a shaft-guided basic sideshift and profile-guided welded fork carriages. They can also be fitted with bolt-on fork carriages on request.

S7

## Double Sideshifter with Two Fork Carriages

The attachment has one rigid fork carriage and one adjustable fork carriage.



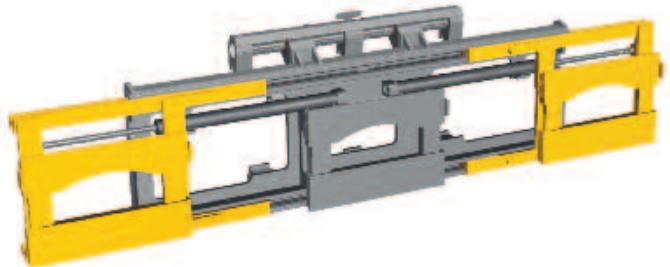
## Triple Sideshifter with Two Fork Carriages

The attachment has two adjustable fork carriages. The adjustment is synchronous and is available with single adjustment on request.



## Triple Sideshifter with Three Fork Carriages

The attachment has one central rigid fork carriage and two independently adjustable fork carriages.

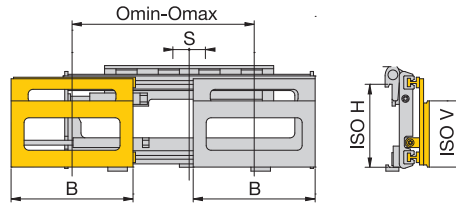


All designs listed in the tables are examples. Other designs on request.

# Multiple Sideshifters (Heavy-Duty)

## Double Sideshifter

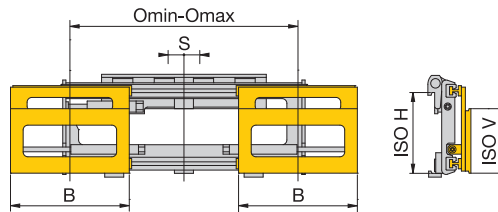
with two fork carriages ·  
2 hydraulic functions



Model	Load capacity attachment	Load capacity per fork carriage	LC (LSP)	ISO H	Side-shift	Frame width	Omin-Omax	B	ISO V	Price
	kg	kg	mm		mm	mm	mm			
S 7 - 2S 25	2500	1250	600	3	±100	1550	950-1150	850	2	
S 7 - 2S 35	3500	1750	600	3	±100	1550	800-1120	800	2	

## Triple Sideshifter

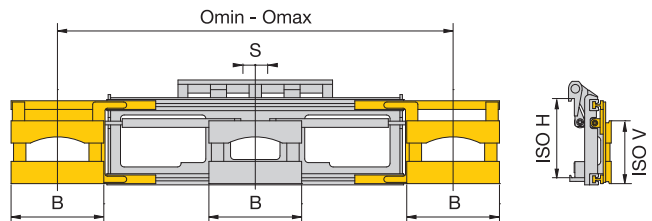
with two fork carriages ·  
2 hydraulic functions



Model	Load capacity attachment	Load capacity per fork carriage	LC (LSP)	ISO H	Side-shift	Frame width	Omin-Omax	B	ISO V	Price
	kg	kg	mm		mm	mm	mm			
S 7 - 3S 35-2	2600	1300	600	3	±100	1550	950-1250	720	2	
S 7 - 3S 35-2	3500	1750	500	3	±100	1550	800-1440	800	2	
S 7 - 3S 40-2	3600	1800	500	3	±100	1900	1100-1800	800	2	
S 7 - 3S 40-2	3600	1800	500	3	±100	2200	1200-2200	1000	2	
S 7 - 3S 100-2	8000	4000	600	4	±150	1850	800-1500	800	4	

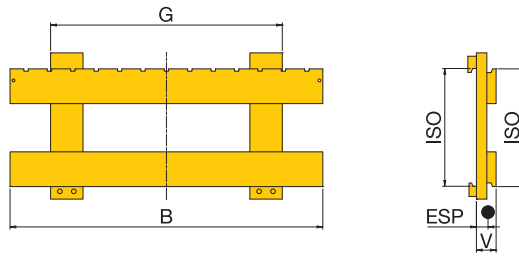
## Triple Sideshifter

with three fork carriages ·  
2 hydraulic functions + solenoid valve



Model	Load capacity attachment	Load capacity per fork carriage	LC (LSP)	ISO H	Side-shift	Frame width	Omin-Omax	B	ISO V	Price
	kg	kg	mm		mm	mm	mm			
S 7 - 3S 45-3	4500	1500	600	4	±150	2550	1600-2800	770	3/So	
S 7 - 3S 55-3	5400	1800	600	4	±150	2100	1600-2400	720	3/So	

# Front Carriages

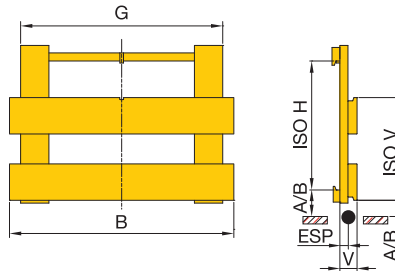


S7

Model	Load capacity	LC (LSP)	ISO	B	G	V	CoG (ESP)	Weight	Add. weight per 100 mm width of fork carriage	Price	Surcharge per 100 mm add. width
	kg	mm		mm	mm	mm	mm	kg	kg		
S 7 - VGT 15	1500	500	2	1040	960	60	30	115	8,3		
S 7 - VGT 25	2500	600	2	1150	1070	60	30	125	8,3		
S 7 - VGT 30	3000	500	3	1150	1070	80	45	190	12,0		
S 7 - VGT 40	4000	500	3	1200	1070	80	45	200	12,0		
S 7 - VGT 45	4500	600	3	1200	1070	85	50	220	12,0		
S 7 - VGT 48	5000	600	3	1300	1150	85	50	235	12,0		
S 7 - VGT 50	5000	600	4	1400	1200	95	55	330	15,2		
S 7 - VGT 60	6000	600	4	1800	1600	95	55	420	15,2		
S 7 - VGT 70	7000	600	4	1800	1600	100	60	430	15,2		

- Surcharge for QD hooks for ISO 2
- Surcharge for QD hooks for ISO 3
- Surcharge for QD hooks for ISO 4

# Front Carriages as adapters



Model	Load capacity	LC (LSP)	ISO H	ISO V	B	G	V	CoG (ESP)	Weight	Add. weight per 100 mm	Price	Surcharge per 100 mm add. width
	kg	mm			mm	mm	mm	mm	kg	kg		
S 7 - VGTA 25	2500	600	2	3	1050	960	80	45	170	12,0		
S 7 - VGTA 28	2500	600	3	2	1050	960	70	35	130	8,3		
S 7 - VGTA 48	5000	600	3	4	1350	1150	100	60	335	15,2		
S 7 - VGTA 50	5000	600	4	3	1350	1150	90	50	260	12,0		

- Surcharge for QD hooks for ISO 2
- Surcharge for QD hooks for ISO 3
- Surcharge for QD hooks for ISO 4

- Please indicate ground clearance when ordering.